



# Radon Monitoring Systems

[www.southernscientific.co.uk](http://www.southernscientific.co.uk)



**Southern  
Scientific**

EXPERIENCE & EXPERTISE



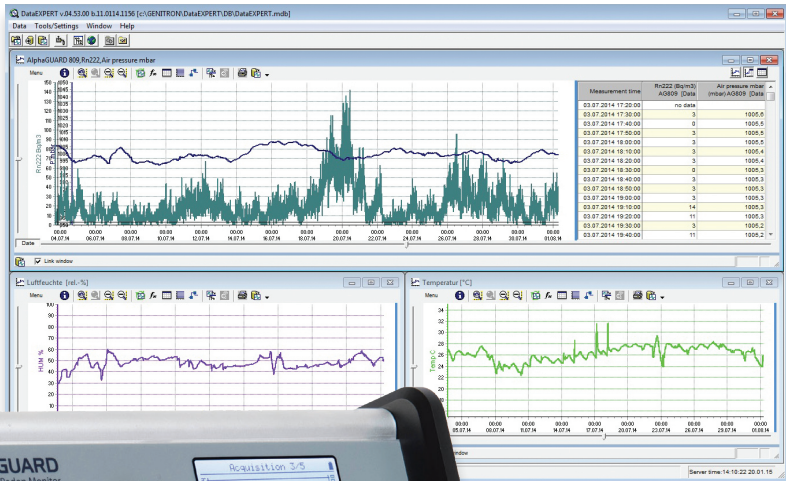
Radon monitoring systems for laboratory or field applications

Southern Scientific provide radon monitoring instruments, software and accessories produced by leading manufacturers Saphymo and Pylon.

AlphaGUARD

AlphaGUARD is a portable, battery- or net-operated high storage capacity radon monitor.

- High sensitivity and fast linear response at 2 to 2,000,000 Bq/m<sup>3</sup>, 5 cpm to 100 Bq/m<sup>3</sup>, 0.05 to 54,000 pCi/l, 5 cpm at 3 pCi/l.
- Multi-parameter features.
- Long term stable calibration.
- Maintenance-free operation.
- DATAVIEW pro software for data download and measurement set up.



Soil Gas Probe

The soil gas probe is perfect for sampling and continuous monitoring of radon. Suitable for manual as well as for machine driven propulsion, the exchangeable drilling tip and the aqua-stop filter ensure easy and safe sampling.

- Screening measurement (sampling).
- Easy to use.
- Cost effective.

AlphaPM

The AlphaPM radon progeny meter is an active monitor with high sensitivity which measures time-resolved airborne radon progeny concentration.

The device is designed to be connected to the AlphaGUARD radon monitor for measuring the radon progeny concentration in parallel to the radon gas.

- High sensitivity 130 pulses/h at 1 Bq/m<sup>3</sup> EEC (0.03 MeV/cm<sup>3</sup>)
- Quasi-continuous sampling in 10 min. intervals.
- Sensitive semiconductor (PIPS).
- Optimised for easy accurate performance.
- Data stored in connection with AlphaGUARD PQ2000 Pro.





## AquaKIT

AquaKIT is an optional accessory to the radon monitoring systems AlphaGUARD PQ2000 PRO.

In combination with the radon monitor and an electric pumping unit (AlphaPUMP or LabPUMP) the AquaKIT allows the radon concentration in water samples to be determined directly and precisely.

- Portable for laboratory and field measurement.
- Heat resistant active coal filter cartridge for minimising the radon background prior to precision measurements.
- Comprehensive range of accessories.



## AlphaE

The AlphaE is an ultra-small continuous radon monitor for fast time-resolved radon monitoring in buildings, outdoors, as well as in mines.

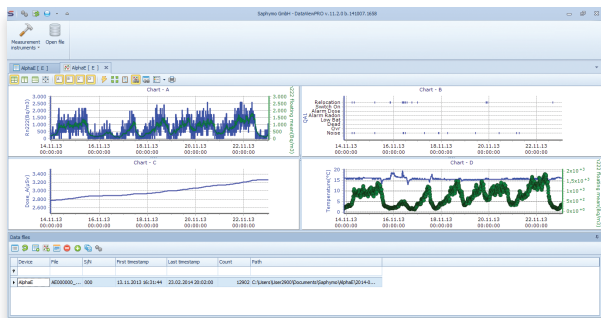
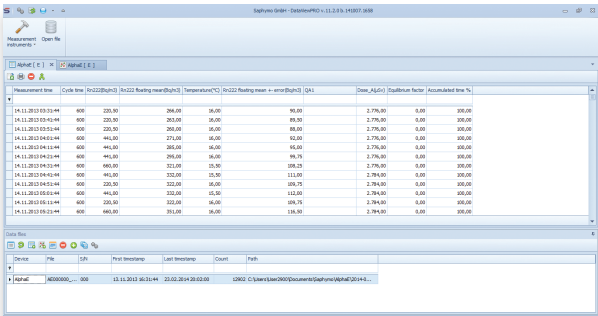
- Time resolved measurement for the exact determination of radon.
- Measurement from 20 Bq/m<sup>3</sup> to 10 MBq/m<sup>3</sup> (0.54 pCi/l to 270 nCi/l).
- Up to 6 months battery life.
- Acoustic alert for radon concentration and dose.
- Lightweight.



## DataVIEW

DataVIEW is a user-friendly PC application for data collection, analysis and visualisation.

- Designed for an easy set up of the AlphaE and AlphaGUARD, data download and professional data comparison.
- Direct export to Excel.
- Generates customised reports.



## Pylon AB6

The Pylon AB6 Portable Radiation Monitor is a laboratory grade instrument which provides fast, accurate measurement of radon levels. Robust and reliable it incorporates advanced technology and user-friendly features for enhanced performance and versatility.

- Compact, lightweight with a rechargeable battery and built-in PMT.
- Multiple detectors interface with internal PMT enabling a variety of measurements.
- LCD Touch Screen offers increased visibility and data entry options.
- Host and client USB interfaces provide fast, efficient data transfer.



## Service and Support

Southern Scientific has a team of fully qualified service engineers, who support customers spanning the length and breadth of the UK. We can provide factory or on-site service as required, based on single visits, planned maintenance or full support under contract. We maintain a high level of spare parts, ensuring lifetime support capability.

Our systems group can offer its service for the larger installed equipment, from initial planning to installation, completion and training. We can provide expert knowledge and experience, gained through involvement in a number of large-scale projects throughout the years.

## ISO Certified

Southern Scientific Ltd is certified to ISO9001 and ISO 13485 representing the high level of quality assurance and management that we provide at every stage of the supply process, whether a product is distributed on behalf of our trusted manufacturers or constructed in our UK workshop. This accreditation means that our customers can place an order knowing that the delivered product will be suitable for its intended use, fully compliant with EU legislation and in full working order.

All our products are CE marked.

### **Southern Scientific Limited**

Scientific House, The Henfield Business Park  
Shoreham Road, Henfield, BN5 9SL, UK

**E-mail:** [info@southernscientific.co.uk](mailto:info@southernscientific.co.uk)

**Tel:** +44 (0)1273 497600

**Fax:** +44 (0)1273 497626

[www.southernscientific.co.uk](http://www.southernscientific.co.uk)

