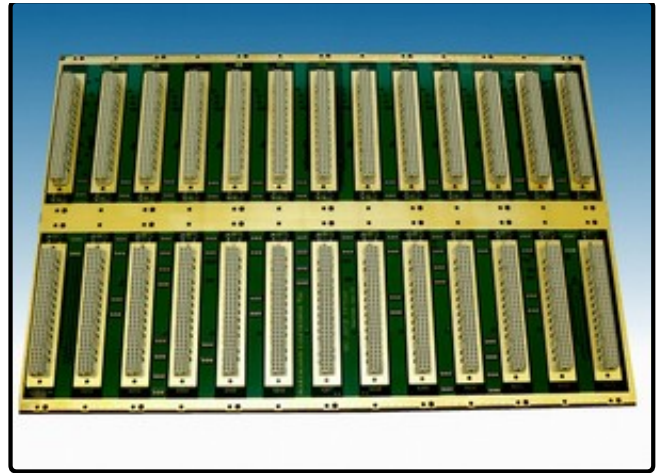
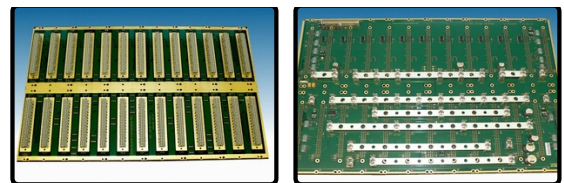


# Backplane VXI

[Request Quote](#)



Backplane VXI



**The 13 slot monolithic Hartmann Elektronik VXI-backplane is based on a HIGH SPEED DESIGN concept. Low reflection is achieved by means of uniform signal line surge impedance. Shielding of each line assures minimum coupling and crosstalk.**

In order to prevent interference on signal lines which might result from reflection at open line ends, these lines must be terminated. Passive as well as active termination is available. The advantage of active termination is the reduced closed-circuit current consumption. Passive termination features better frequency response. For this VXI backplane electronic automatic daisy chaining is provided. For power distribution current bars are used.

## Main features

- 6U HARTMANN monolithic 13 slot VXI-J1/J2 backplane
  - Cross talk reduced high speed design,
  - Automatic electronic daisy chain, active or passive termination
  - Excellent power distribution capability by current bars
- 
- Monolithic J1/J2 HARTMANN VXI backplane, 13 slots
  - High speed technology with optimized RF shielding and minimized cross talk
  - Solid electrically conducting GND surface in mounting area
  - Automatic daisy chain (mechanically or electronic)

- Flat cable style connector for sense and control
- Provision for up to 8 temperature sensors (module temp. checking)
- Excellent power distribution capability by current bars and M6 terminals
- IPMBPPWR power management connector

Item	Bus	Size	Connectors	Slots	Termination	Daisy Chain
B173613A7D	VXI	6U	J1/J2	13	active	Electronic
B173613P7D	VXI	6U	J1/J2	13	passive	Electronic

**Other configuration on request!**

## 6U VXI backplane

Hartmann Elektronik monolithic multi-layer 13 slot VXI bus with active automatic daisy chain and passive or active termination. Outfitted with 96pin DIN J1/J2 connectors as per VXI specification:

Power per slot ( at 20°C / 70°C)	VXI C size 13 slot J1/J2	VXI D size 13 slot J1/J2/J3
5V	14A / 10.5A	24A / 18A
+/-12V	2A / 1,5A	4A / 3A
-5,2V	10A / 7.5A	20A / 15A
-2V	4A / 3A	10A / 7.5A
+/-24V	2A / 1.5A	4A / 3A
<b>Layers</b>	8	10

### Product Data Sheet

Backplane VXI:

[Print Product Data Sheet](#)

### Documentation

Manual:

Introduction:

[WIENER VME VXI VXS introduction](#)

©2013 W-IE-NE-R, Plein & Baus, GmbH. All Rights Reserved