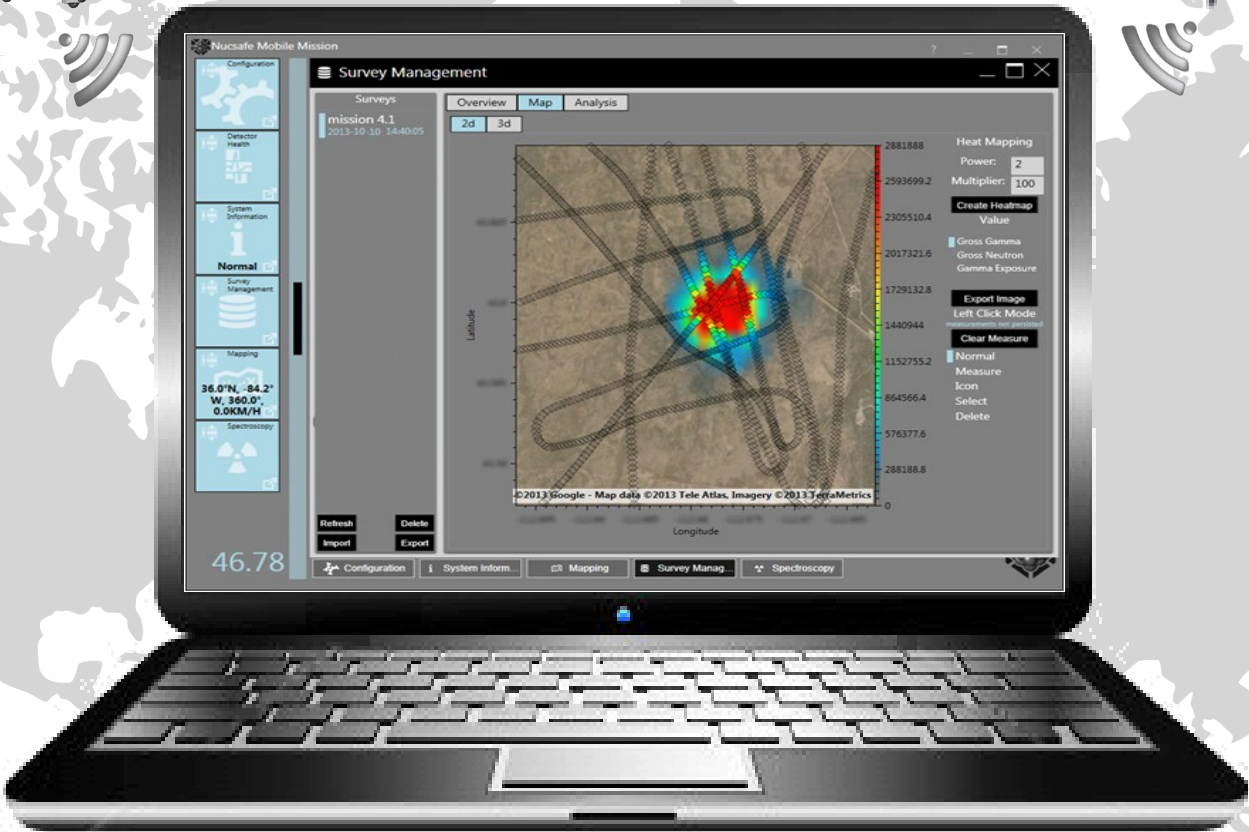


NUCSAFE®

MOBILE MISSION



MOBILE MISSION SOFTWARE

MOBILE MISSION



The process of identifying and prioritizing threats are critical to successfully completing a mission. NuSAFE, Inc. has invested several years working with military, law enforcement and security professionals from around the world, to understand the challenges. The result of this experience is the development of the Guardian Mobile Mission Software Suite. Throughout a mission, personnel can utilize Mobile Mission to help ensure that critical data is disseminated to those who need it, allowing critical decisions to be made quickly and effectively.

NuSAFE's Mobile Mission is built to monitor and track NuSAFE's Guardian mobile radiation detection systems such as man-portable backpacks, aerial systems (ARDIMS) and vehicle mounted systems (VMD) to provide turnkey geospatial radiation detection capabilities. In addition to real-time situational awareness, mission data can be loaded and analyzed post-mission for further analysis.

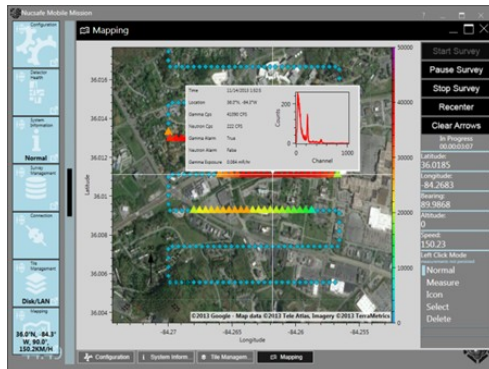
The Mobile Mission can be monitored on a cell phone, PDA, or PC. Mission critical data can be sent to and monitored from a command and control center and a central reach-back facility for further in depth analysis

AT A GLANCE

- Available for aerial, mobile, transportable, and custom configurations
- Rich function set
- Comprehensive displays
- Breadcrumb mapping
- Heat contouring
- Systems' health status
- Highly configurable operation
- Post mission analysis capable
- Windows-based software
- Phone software (optional)



LIVE MAPPING FEATURES



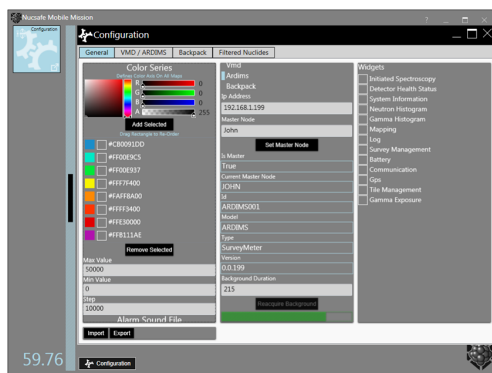
- Map displays current position, bearing, altitude and speed
- Pan/zoom
- On motion a color coded breadcrumb is dropped
- Click the breadcrumb to see CPS, gamma exposure, alarm status, time, and location
- Start and stop surveys
- Drop icons
- Measure distance between points.

SYSTEM INFORMATION FEATURES



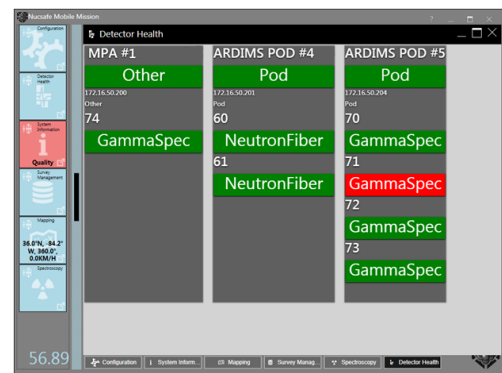
- Allows user to see general detector health, as well as, alarm status.
- Live counts as well as background for system and each region-of-interest (ROI).
- Displays nuclide identification and confidence level.
- Live icon displays alarm status.

CONFIGURATION FEATURES



- Turn widgets on/off
- Control system connections.
- Control map color, axis, and range
- Control alarm options
- Reacquire background
- System specific set-ups
- Configurations can be exported/imported to allow other users to the same things
- Filter nuclides for display and alarm
- User definable regions-of-interest (ROI)

DETECTOR HEALTH FEATURES



- Displays detector health of each system currently running and attached to Mobile Mission.



TECHNICAL SPECIFICATIONS

Operating System	Microsoft Windows 8 or Windows 10
Support software	Microsoft .Net Framework 4.5 NuSAFE Radelyzer NuSAFE PanelServer
Memory	4GB minimum , 8GB recommended
Processor (minimum)	Intel i5 Ivybridge 1.8 GHz
Processor (recommended)	Intel i7 Ivybridge 3.0 GHz
Storage Disk	32GB (SSD recommended)
Networking	Wired and/or Wireless
Data resolution	1 second
Maximum single survey	8 hours
Maximum cumulative surveys	16 hours (approx 2GB)



NuSAFE, Guardian, the Guardian shield, Guardian Predator and Guardian Defender are all registered trademarks of NuSAFE, Inc.

CONTACT US