

Guardian RPM

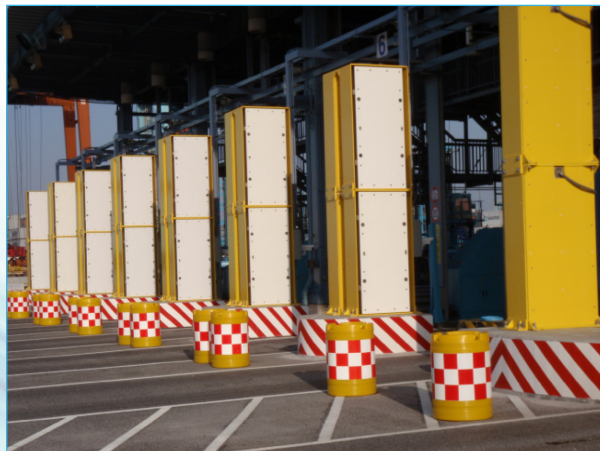
Radiation Portal Monitor

A customisable system for vehicle and freight radiation monitoring.

The modular design of the Guardian vehicle monitoring systems uses one or more radiation sensor panels (RSP). Each RSP may contain one or more neutron smart detectors made of a unique neutron-sensitive scintillating glass fibre or traditional ^3He pressurised gas tubes or the recently approved B10 pressurised gas tubes. Each RSP may also include one or more gamma ray smart detectors made of polyvinyl toluene (PVT) or sodium iodide NaI(Tl) detectors. The choice of detectors is typically a customer option, as advantages and disadvantages exist for each type of gamma ray and neutron detection technology.

The system hardware can be monitored from anywhere on the network or over the internet (when access is granted into the site network), using the included service and diagnostic software. This software application provides complete control of all system hardware settings; there are no controls or manual adjustments required at the hardware.

All systems are designed to meet ANSI, ASTM, or IAEA performance standards; however, if a customer has a special request, systems can be designed to meet those requirements.



Features

- Permits throughput speeds up to 20 mph (30 kph).
- Gamma and neutron sensitive.
- Available gamma spectroscopy.
- NORM discrimination.
- Very low false alarm rate (1:15,000 typical).
- Fully digital system design.
- Superior signal to noise ratio.
- Patented Threat Matrix, customisable for your location.
- Advanced analysis algorithms for high sensitivity results with essentially zero false alarms.
- No VOID or uneven loading distribution alarms.
- Minimum nuisance alarms with patented NORM rejection.
- Multi-faceted alarm notification methods.
- Real-time state of health reporting for identification issues before they turn into problems.
- Automatic system sensitivity monitoring.
- Modular system design for easy servicing.
- System designed for easy on-site service by local staff for 'instant' service support.
- Sophisticated occupancy sensors optimised for protection from sunlight, environmental elements, and shock damage.
- Source localisation.
- Available remote 24/7/365 monitoring and support by trained experts fro reach back and maintenance.
- Video capture.
- Overview camera.
- Side view camera.
- Source location profile.
- Battery backup >3 hours.



Software

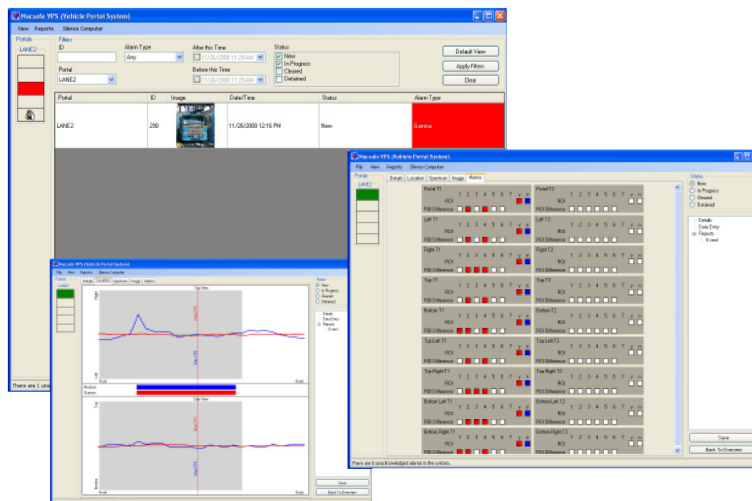
COBRA software used to operate the system can be installed on any number of computers connected to the network, each running its own user-defined configuration. This allows the portal to be operated in a variety of ways. Each instance of the programme will not interfere with each other instance running at any other location.

The Threat Matrix provides a runtime rule evaluation engine consisting of numeric, logical, and string operations combined with logical and mathematical operands. The result of the expression becomes a true or false value. If true, the user can specify a rule definition, including a message to be displayed, a visible alarm indicator, an audible alarm indicator, and hyperlinks to other files.

The engine to build the Threat Matrix is contained in an independent software module. Typically, the application and specific rule set is controlled, prohibiting unauthorised or unintentional access and modification.

Software controls and parameters at a glance

- Detector high voltage.
- Detector gain.
- Detector pole zero.
- Detector ROI settings.
- Detector noise threshold.
- Detector temperature.
- SSA temperature.
- Sampling rate.
- Time 1 (T1) and Time 2 (T2) averaging rate.
- IP and network addressing.
- Counts per ROI.
- Live time.



Detector configurations

Systems can be configured in a number of ways. Configurations can accommodate both on-road and off-road vehicles. Various detectors can be utilised within a panel depending upon specific requirements.

All systems are manufactured in the USA, in accordance with ISO 9001:2008 compliance processes. The manufacturing facility is also in compliance with both ISO 14001 and OHSAS 18001.

System options

- Traffic management system.
- RFID
- Overview camera.
- Automatic Number Plate Recognition (ANPR).
- Customisable Threat Matrix.
- Spectroscopy
- Battery backup.
- Remote monitoring.



Specifications (Standard Configuration)

Architecture

- Modular and compact design.
- Patented NORM rejection.
- Dynamic background updating for lowest possible detection levels, even when weather is a problem.
- 50 mSec (20/Sec) data sampling rate for pinpoint accuracy.
- State of health and error reporting.
- Design enables fast fault diagnosis and resolution.
- Full ethernet connectivity.
- RSO overview of all system alarms via network.
- Remote alarm validation and reporting.
- System sensitivity analysis and auto correction to minimise signal loss, with no radioactive sources required to test system performance.
- Support for Radio-Frequency Identification (RFID) tags to permit absolute vehicle or container identification in a very cost effective manner.
- 24/7/365 technical support for fast, responsive support from technical specialists.

System controller

- 90/240 VAC input.
- Industrial COTS processor operating temperature range: -40°C to +80°C
- All data storage on solid state memory.
- Windows XP OS.
- IP67 rated enclosure.
- Ethernet (wired, fibre, or wireless) communication.

Detector

- Gross gamma, gamma spectroscopy and neutron detection available.
- Total DSP (Digital Signal Processing).
- ADC/DSP: 256 channel spectrometer on each PVT, 20/sec data sampling rate.
- High performance occupancy sensors.
- -20°C to + 50°C system operating temperature range.
- No user adjustments required.
- Energy range: 2 keV to 3.3 MeV
- 12 digitally controlled output drivers (24 VDC @ 100 mA)
- Automated system sensitivity checks.
- 24 VDC detector and controller operation.
- Synchronised data analysis across all panels.
- Automated report generation with detailed alarm analysis.
- Exposure-rate or count-rate output (user selectable).
- Background trending analysis.
- Management reports.
- Maximum, minimum, and average speeds reported.
- Remote communications package (standard).
- Battery backup for 3 hours of operation (optional).
- Password protected.
- Automated e-mail and SMS generation to multiple recipients.
- Data traceability.



Scientific House, The Henfield Business Park
Shoreham Road, Henfield, West Sussex, BN5 9SL
Tel: +44 (0)1273 497600, Fax: +44 (0)1273 497626
E-mail: info@southernscientific.co.uk, Web: www.southernscientific.co.uk

A  LabLogic Company