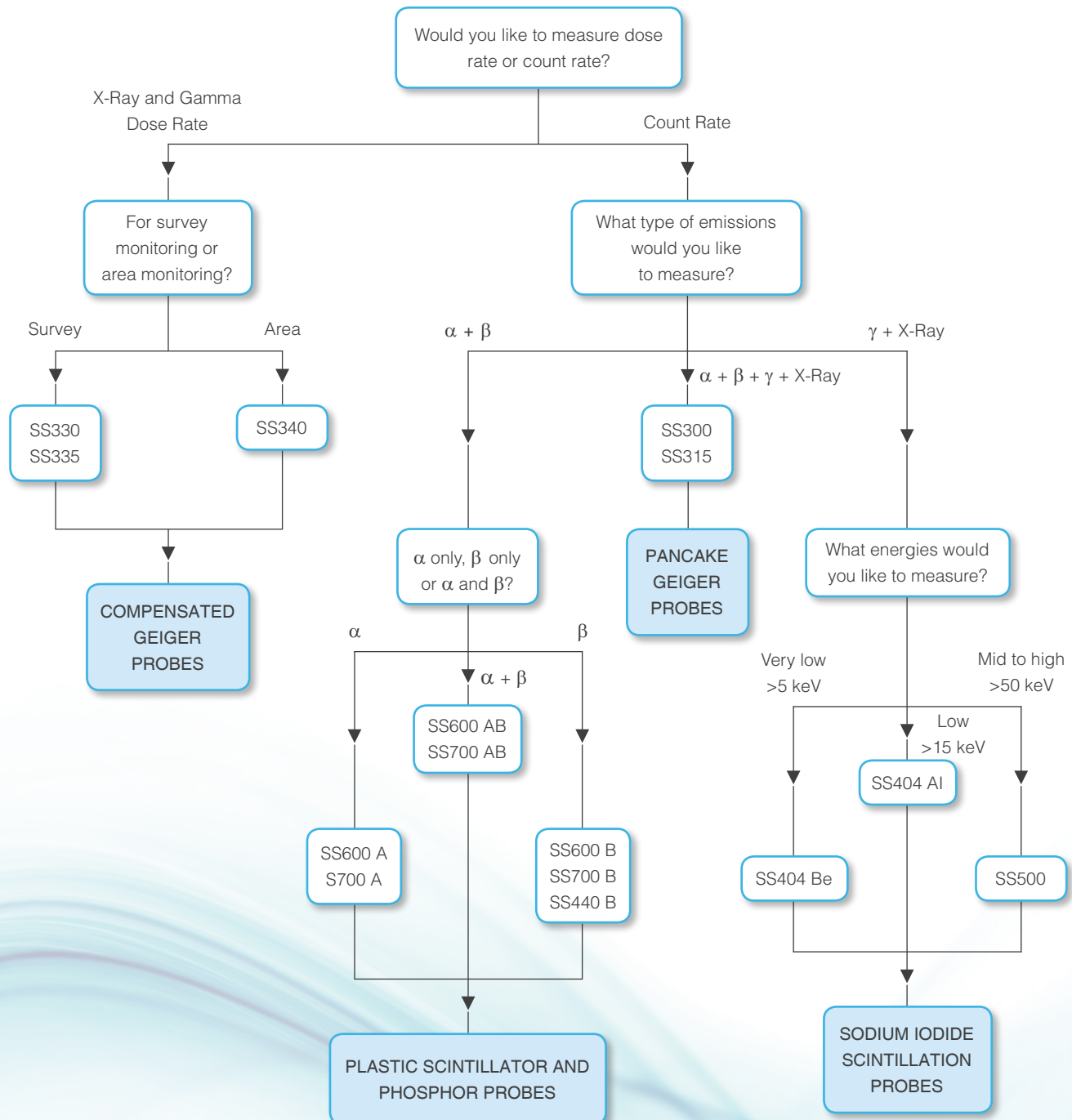


# Probe Selection Guide

## For Radhound Monitors

If you are unsure of which is the most suitable probe for your application, please use this chart to help guide your selection.



## Specifications

Detector crystal*	32 mm x 2.5 mm NaI
Energy response*	1.5 keV to 250 keV for SS404 Al 5 keV to 250 keV for SS404 Be
Sensitivity*	3.8 cps per Bq/cm <sup>2</sup> for <sup>125</sup> I 1.6 cps per Bq/cm <sup>2</sup> for <sup>99m</sup> Tc 1.4 cps per Bq/cm <sup>2</sup> for <sup>57</sup> Co
Unit Dimensions	380 x 300 x 155 mm
Temperature range	-10°C to + 50°C
Weight	Empty: 8.8 kg Complete: 14.1 kg

\*Specifications using SS404 Al probe. Full range of alternative detectors available.



Scientific House, The Henfield Business Park  
Shoreham Road, Henfield, West Sussex, BN5 9SL  
Tel: +44 (0)1273 497600, Fax: +44 (0)1273 497626  
E-mail: [info@southernscientific.co.uk](mailto:info@southernscientific.co.uk), Web: [www.southernscientific.co.uk](http://www.southernscientific.co.uk)

A  LabLogic Company