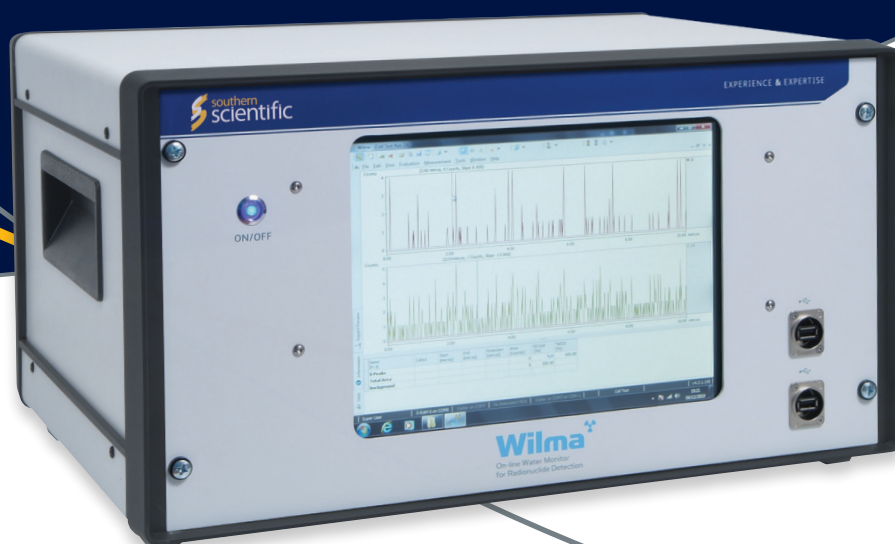


# Product Datasheet

# Wilma

## On-line Water Radioactivity Monitor



### Wilma Benchtop System

|  |  |
|--|--|
| Dimensions (mm)  | 520 (W) x 400 (D) x 300 (H) mm   |
| Mass (kg)  | 30   |
| Power  | 100 - 240 Vac<br>Internal power supply output rated at 24 Vdc, 6.5A (150 W max.) |
| Interfaces   | USB<br>Ethernet option<br>Output to external data logger (e.g. MODBUS) option    |
| Detector Geometry  | 2 x 28 mm diameter PMTs operating in coincidence mode                            |
| Detector Shielding   | 10 mm Pb phosphor bronze<br>Additional Pb shield options                         |
| Integral Scintillation Cocktail Pump Flow Rate Range (ml/min)      | <0.5 to 30   |
| Integral Sample Pump Flow Rate Range (ml/min)                      | <0.5 to 30   |
| Integral Wash Solution Pump Flow Rate Range (ml/min)               | <0.5 to 30   |
| Integral Standard Solution Pump Flow Rate Range (ml/min)           | <0.5 to 30   |
| Counting Window Discrimination                                     | Two counting channels, 0-9999 mV pulse amplitude range                           |
| Background count rate (open window, luminescence subtracted) (cpm) | <15  |
| Background count rate (open window, non-subtracted) (cpm)          | <40  |



**Southern  
Scientific**

EXPERIENCE & EXPERTISE

## Wilma Benchtop System

**<sup>3</sup>H Counting Efficiency**  
(unquenched, %)

>50

**<sup>14</sup>C Counting Efficiency**  
(unquenched, %)

>90

### Flow Cell Ranges

5 ml bulk liquid cell as standard  
Coiled liquid and packed solid scintillator cells available as options (100 µl to 1 ml)

### Flow Options

Discrete sampling mode (default)  
Continuous sampling mode (optional)  
Automated wash cycle  
Automated standard introduction

### External I/O

4 x USB  
Temperature sensor (optional)  
HDMI  
Ethernet Network Port

### Control Software

Integrated Wilma software and user interface via industrial fanless touchscreen PC

### Fluid Handling

Liquid manifold with integral switching valves  
Standard bulkhead tubing fittings for 1/8" (3.2 mm) OD tubing and M6 metric thread

### Options

Multichannel analyser (MCA) for LSC spectra

### Southern Scientific Limited

Scientific House, The Henfield Business Park  
Shoreham Road, Henfield, BN5 9SL, UK

**E-mail:** [info@southernscientific.co.uk](mailto:info@southernscientific.co.uk)

**Tel:** +44 (0)1273 497600

**Fax:** +44 (0)1273 497626

[www.southernscientific.co.uk](http://www.southernscientific.co.uk)

