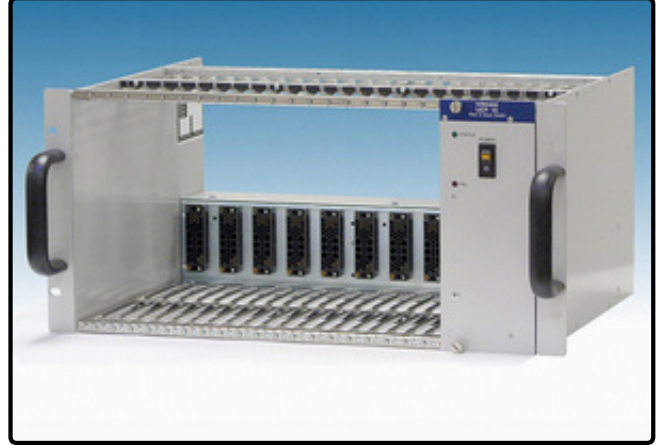


NIM Compact 150W

[Request Quote](#)



NIM Compact 150W



The WIENER NIM compact series is the low-cost entry into the NIM world. This is achieved by combining the economic steel-aluminum UEN 04 bin with a very compact 150W slot power supply. The result is a lightweight NIM crate with reduced depth. To be compatible to all NIM modules the UEP15 provides all standard (6) DC voltages as well as 115V AC.

Main Features:

- 12 slot non-ventilated NIM bin UEN 04 (10 slots free) , 19" rack mountable
- Stabilized stainless steel card guide structure
- UEP15 power supply with front side plug-in slot power supply 2.5 NIM slots wide, 150W power output
- 6-fold DC outputs (+/-6V, +/-12V, +/-24V), stabilized by adjustable monolithic voltage regulators switch-off protection for over / under voltage and over temperature failures
- AC input 230V/50 Hz or 110V/60Hz

UEN 04 NIM Compact Bin:

- 12 slot non-ventilated NIM bin UEN 04 (10 slots free)
- Stabilized stainless steel card guide structure
- Bin equipped with long-life NIM connectors and completely
- Dimensions: 19" (483mm) x 5U (222.3mm) x 340mm [whd], weight: ca. 5 Kg

UEP 15 power supply:

- Front side plug-in slot power supply 2.5 NIM slots wide, 150W power output

- 6-fold DC outputs (+/-6V, +/-12V, +/-24V), stabilized by adjustable monolithic voltage regulators switch-off protection for over / under voltage and over temperature failures
- Power distribution rear side via standard NIM connector
- Front panel with mains switch and control LED's for status and failure
- AC input 230V/50 Hz or 110V/60Hz
- Dimensions: width 2 ½ NIM, height 183 mm, depth 249 mm, weight: 7.5 kg
- CE Conformity

Standard Crate configurations (other possible on request)

Type	Slots	+6V/-6V	+12V/-12V	+24V/-24V	115VAC	Type/Power
NIM 150C_x	12 (10)*	5A/5A	3A/3A	1.5A/1.5A	0.25A	UEP15 / 150W
NIM 150CAS_x	12 (10)*	5A/5A	3A/3A	2.5A/0.5A	0.25A	UEP15AS / 150W

Note: _x = defines the AC input voltage, factory default is 220V AC (without index)

x = B: 110V AC

x = J: 100V AC

x = E: 240V AC

(* usable slots)

For discontinued items please see the support section!

UEN 04 NIM Bin Compact 5U

Rigid non ventilated construction for powering by UEP 15 Slot-Power-Supply. Wired for use of 10 NIM slots. Slot 11 and 12 occupied by power supply. DC-power feed in via standard NIM connector on slot 12 position. For +/-6V and ground each line has two pins in parallel to reduce the transition resistance.

Current maximum ratings:

Voltage Line	Current / slot	Current / bin	Comment
+/-6V	13A	26A	not sensed
+/-12V	13A	13A	not sensed
+/-24V	13A	13A	not sensed
GND	13	13A	
115V AC		0.5A	Secondary

All NIM bins have clean earth wired with 0,25mm²

NIM Compact Slot Power Supply UEP 15

Plug in power supply for use in UEN 04 bins or for powering every non-powered extant NIM bin. UEP 15 features **all 6 voltages**, stabilized by adjustable monolithic voltage regulators, on the rear NIM connector with standard NIM pin out. Ground and 6V outputs are spliced-wired to two pins for minimized voltage drop.

The integrated blower cools heat sink, components and the toroid transformer. Voltage regulators and transformer are protected against over temperature. Over- under voltage detector (limits ca. +/-3% of nominal voltages) activates mains

cutting relay (red signal "bad status" at front panel).

AC Mains voltages: 100, 115, 225, 240VAC by use of different internal transformer taps.

Power supply DC-Outputs:	+6V	-6V	+12V	-12V	+24
UEP15	5A	5A	3A	3A	1,5A
UEP15 as	5A	5A	3A	3A	3A

Power supply DC-Outputs:	-24V	115VAC	max. power	regulation	application
UEP15	1,5A	0.1A	150W	linear	NIM
UEP15 as	0,5A	0.1A	150W	linear	NIM

UEP15

Input voltage, 47-63Hz	100V, 110V, 215V, 220V, 240V all (+/-10%), 5 internal taps
Soft start	yes
Output: Noise and Ripple: Full load +/-6 / 12 / 24V	<3mVpp / <5mVpp / <10mVpp
Regulation static: Change of output voltage versus load change 10-100%	<0,2% for 6V, 0,1% for 12/24V
Regulation static: change of output voltage versus line change +/-10%	0,02%
Recovery time versus load change 10-100%	<0,15ms
Output impedance: Static / Dynamic(at 100kHz)	1,5mOhm / 0,5 Ohm
Temperature Error	<0,02%/K
Thermal Protection (No. of thermal switches)	(1x) and Regulators internally
Output Current Characteristics (Ishort <3A in foldback regulators), reverse bias diodes!	Constant current and trip off
Dual tracking for complementary outputs	no
Calibration ranges Voltage / Currents	+/-5% / fix limits
Sense compensation ranges, all DC voltages	0V
Status Control for all voltages (Over- Under-Voltage Comparator, defaults +/-0,3%)	Bad Status red LED, unit trips off
Overvoltage Protection, trip off thresholds (defaults)	+/-0,3% of nom voltages
Derating	>40°C with 2% up to 60°C max.
Optional CAN-bus interface for DC voltage monitoring and remote on/off via rear 9 pin sub D connector	

Product Data Sheet

NIM Compact 150W:

[Print Product Data Sheet](#)

Documentation

Manual:

[Manual NIM-CAMAC](#)

Introduction:

[WIENER NIM CAMAC introduction](#)

©2013 W-IE-NE-R, Plein & Baus, GmbH. All Rights Reserved